



*Barking Curfew Tower
Public Realm and landscape improvement*

**Landscape Design Report
FOC0544 03 600**

March 2020



Node

Imperial & Whitehall
23 Colmore Row
Birmingham
B3 2BS

thisisnode.com | 0121 667 9259

Prepared on behalf of Focus Consultants
Project Ref: FOC0544

Document Ref: FOC0544-03-600 DESIGN REPORT.indd

Date	Comment	Created by	Checked by	Version
30.03.2020	Developed Design	PS/LG	PS	-



Contents

• Introduction and Design Principles	04
• Site Location and Appraisal	05
• Concept and Proposed Design	14
• Proposed Material Palette	17

The Curfew Tower public space is an area of predominantly pedestrian use that lies between the historic gateway of Barking Abbey (now largely demolished) and the existing highway that borders the Abbey Park green space. It includes, within its boundary, the primary route for pedestrians and vehicles accessing St Margaret's Parish Church and Barking Abbey ruins.

Barking Abbey itself was a Nunnery destroyed in the sixteenth century, having existed for nine hundred years. It is of significant historical importance and the remaining Curfew Tower that dates to the fifteenth century is Grade II listed. Historic records show that a street named as Church Path led directly to the Tower gate, with built form framing the approach.

The design report builds on the previous work carried out for the Heritage Lottery Fund Round Two submission in January 2017, by East. This document does not seek to re-examine the rationale for design that was used to develop the designs up to the Round Two submission. We have therefore based our approach on the following **key design principles**:

1. Setting

Design a delicate intervention that simplifies and de-clutters the public space in order to provide an appropriate setting for the historic Curfew Tower.

2. Legibility and Place

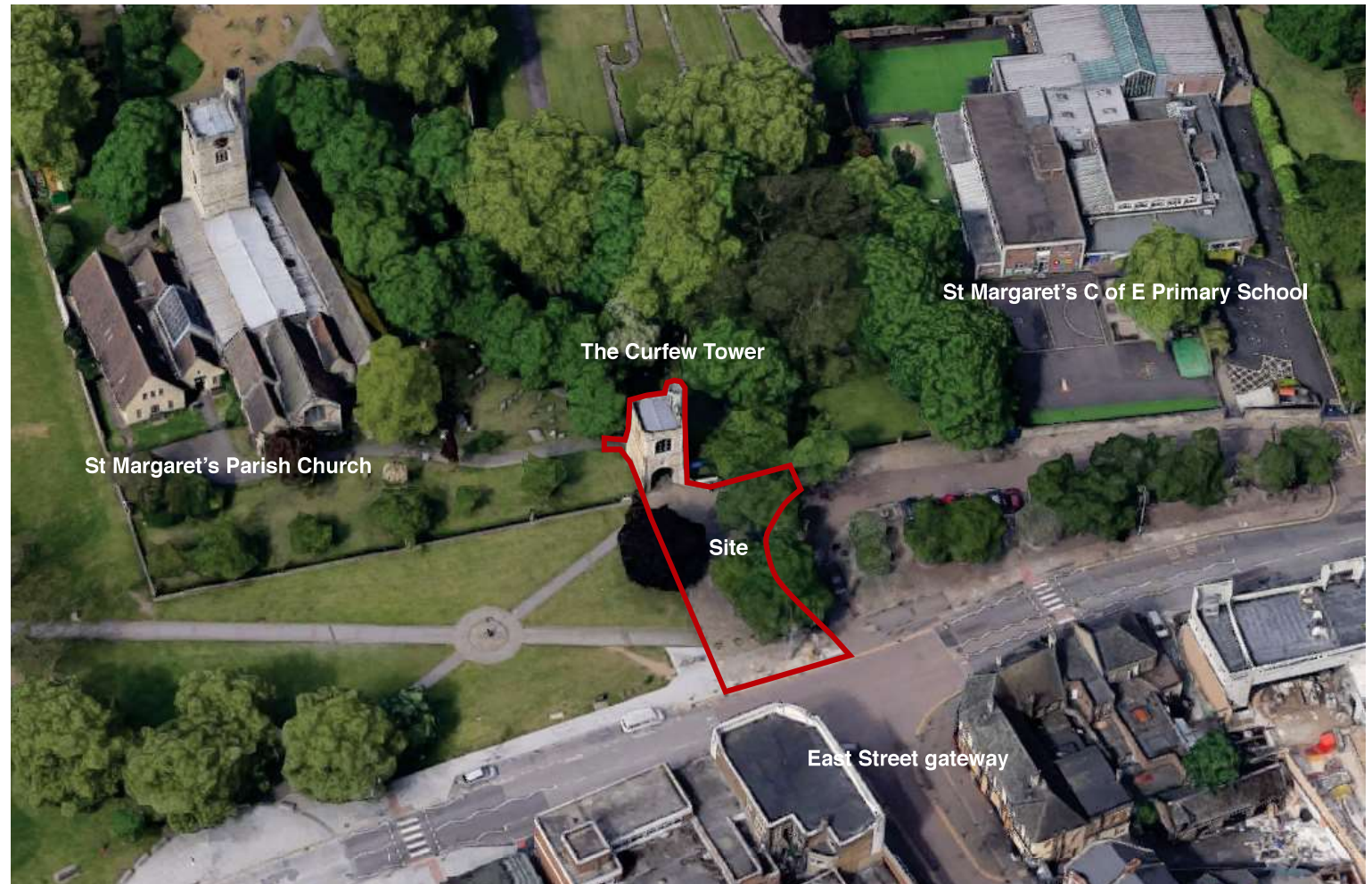
Create an improved visual and physical connection between The High Street, The Curfew Tower and Barking Abbey Grounds. Provide dwell space and opportunity for small gathering and recreational use.

3. Interpretation

Provide interpretation of the site; either within the landscape design layout and furniture or by defined detail elements such as models, castings, pattern or text.

4. Accessibility

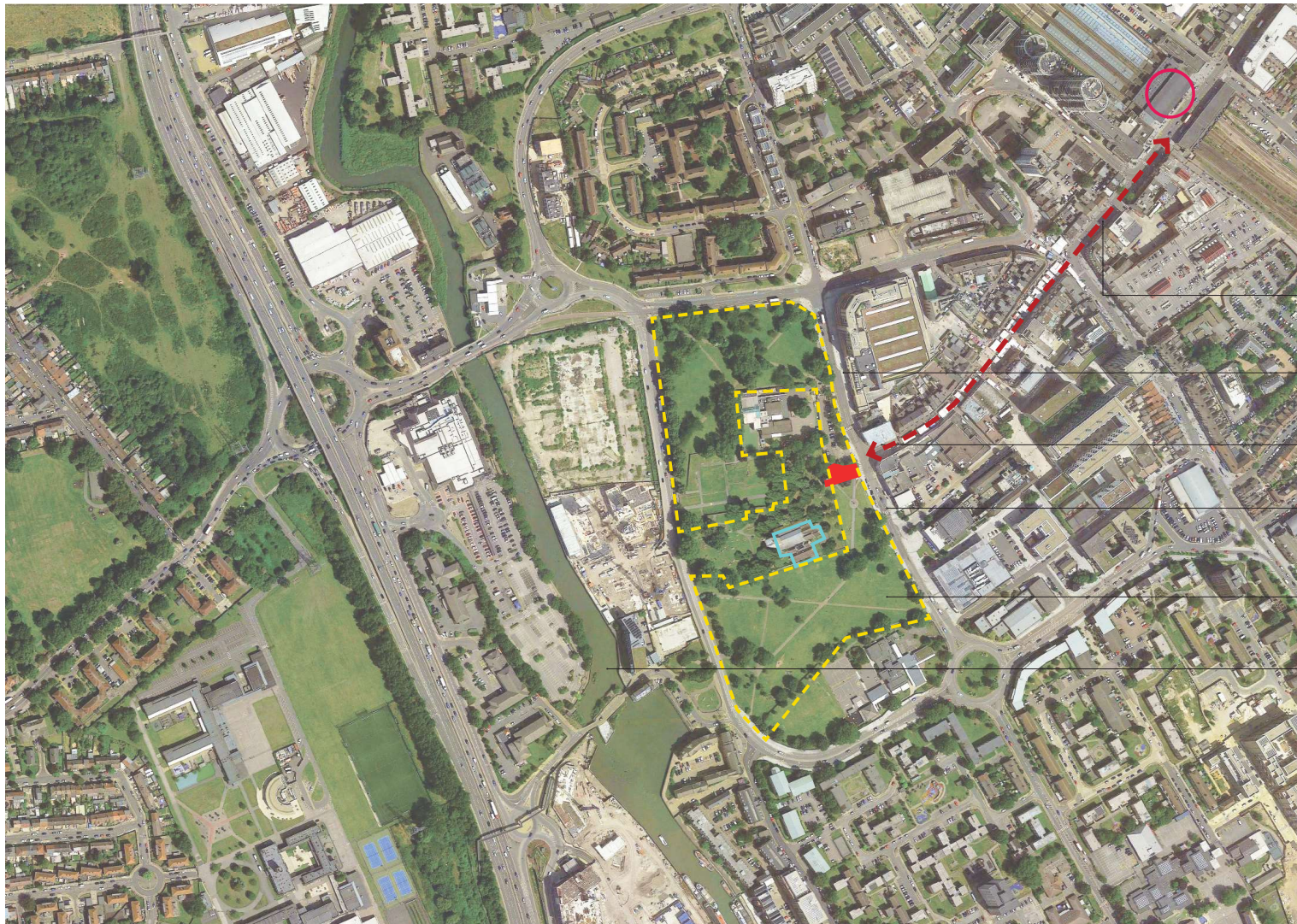
Maintain the existing pedestrian and vehicular access routes to the Abbey Ruins and St Margaret's Church through the Curfew Tower, ensuring a safe and legible design.







Aerial view looking west over Barking Abbey site

Site Location and Appraisal

Wider context and planning designations



-  Barking Rail Station
-  Site Location
-  Barking Abbey: Scheduled Ancient Monument
-  St Margaret's Parish Church

Station Parade

North Street

East Street Gateway

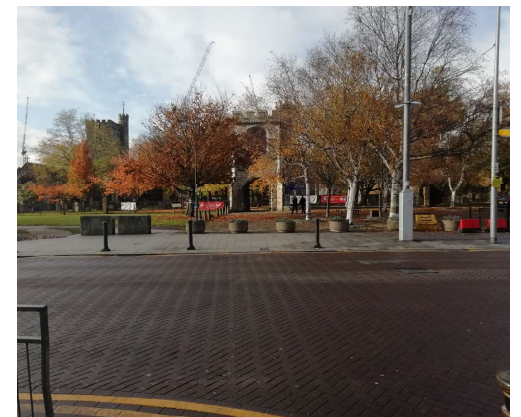
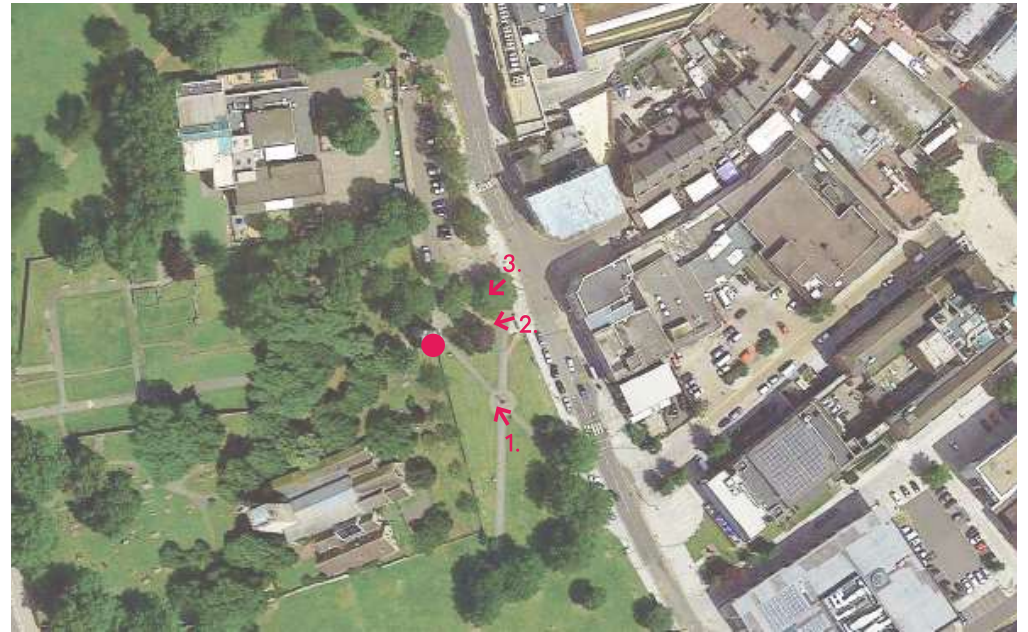
Broadway

Barking Abbey Grounds

River Roding

Site Appraisal

Photographs of existing site



Site Appraisal

Historic Context



Church Path: Street leading to Curfew Tower from the High Street

Curfew Tower

St Margaret's Church: existing



The Abbey with the Curfew Tower in the foreground



Church Path once a street



Street and car park

Site Appraisal

Spatial framework and access



Factors to consider:

- Vehicular access to St Margaret's Church required from vehicular route in front of St Margaret's Primary School - off North Street
- Using the Curfew Tower and historic street as a basis for the design axis

- Pedestrian Area
- Vehicular route from Broadway
- Vehicular access across
- Curfew tower footprint
- Linear framework taken from building footprint and elevation
- Approximate demarcation of historic Street leading to Barking Abbey

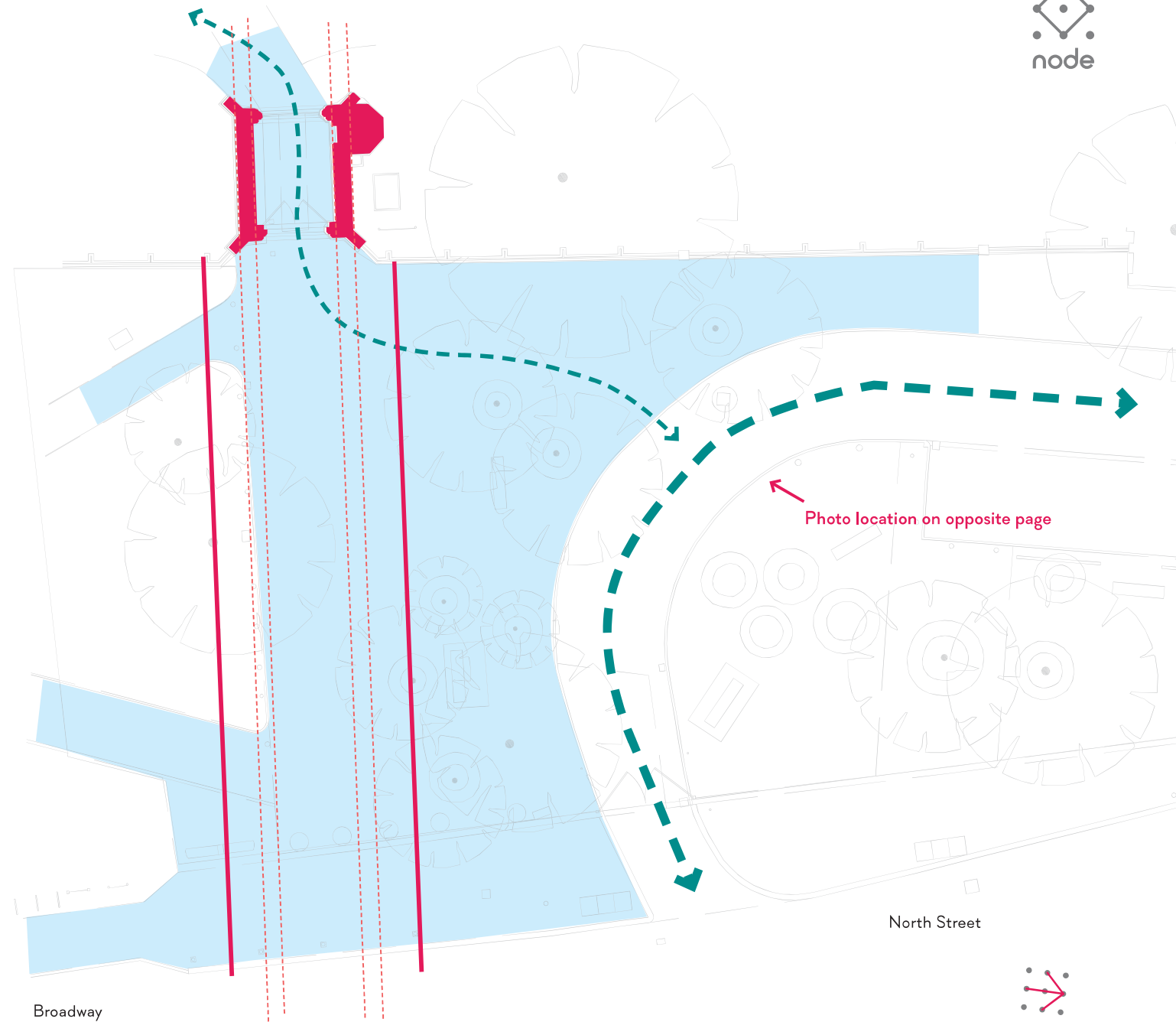


Photo location on opposite page

North Street

Broadway



Scale 1:200 @A3

Site Appraisal

Existing landscape elements




Factors to consider:

- Many physical and visual barriers within the Curfew Tower setting, including trees, furniture and paving materials
- Using the Curfew Tower and historic street as a basis for the design axis

 Cone of visibility to create frontage setting for Curfew Tower

 Trees within visibility cone

 Timber seating bench

 Concrete bollard

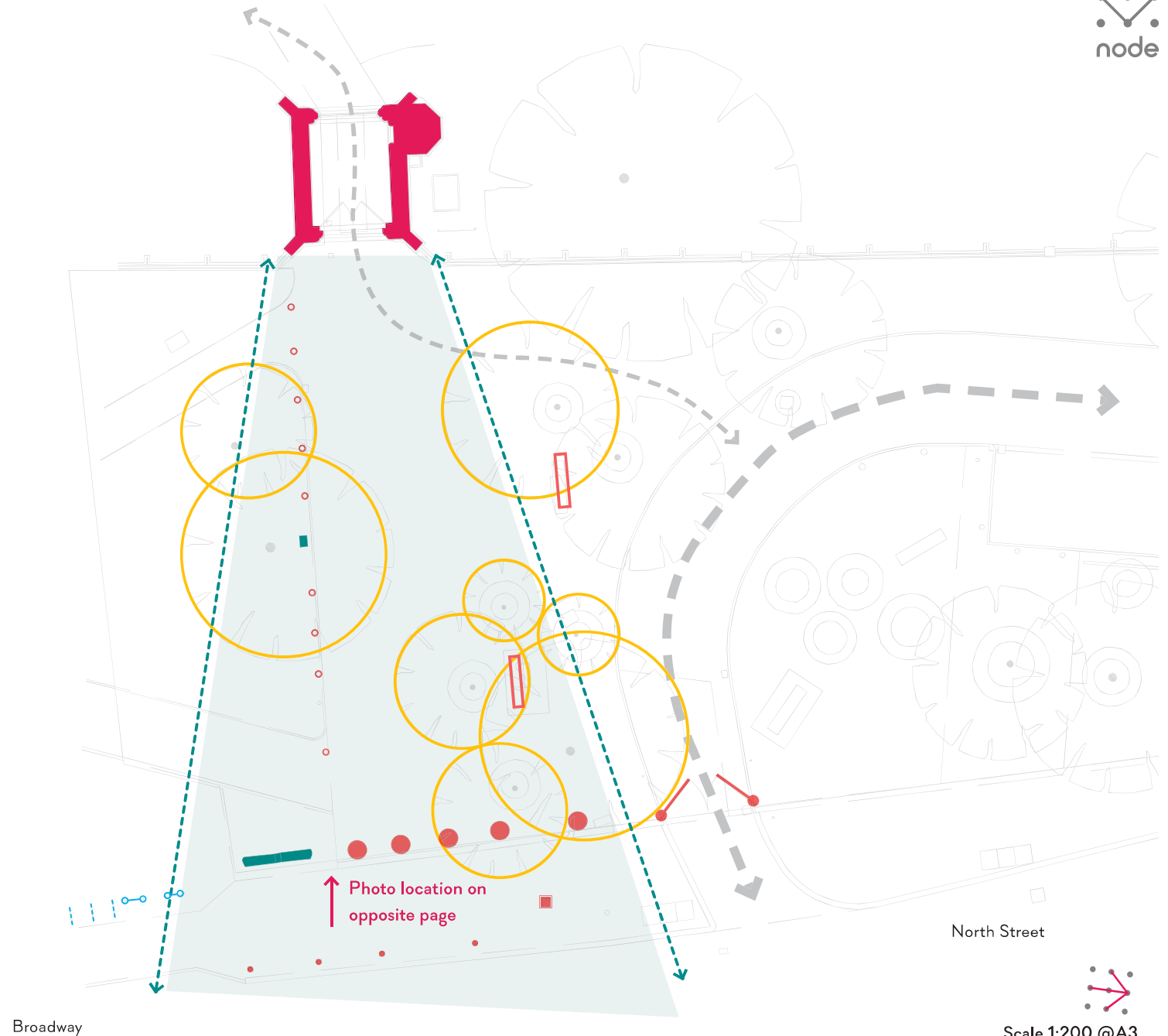
 Concrete planters

 CCTV column

 Vehicular gates

 Signage

 Cycle stands






Site Appraisal

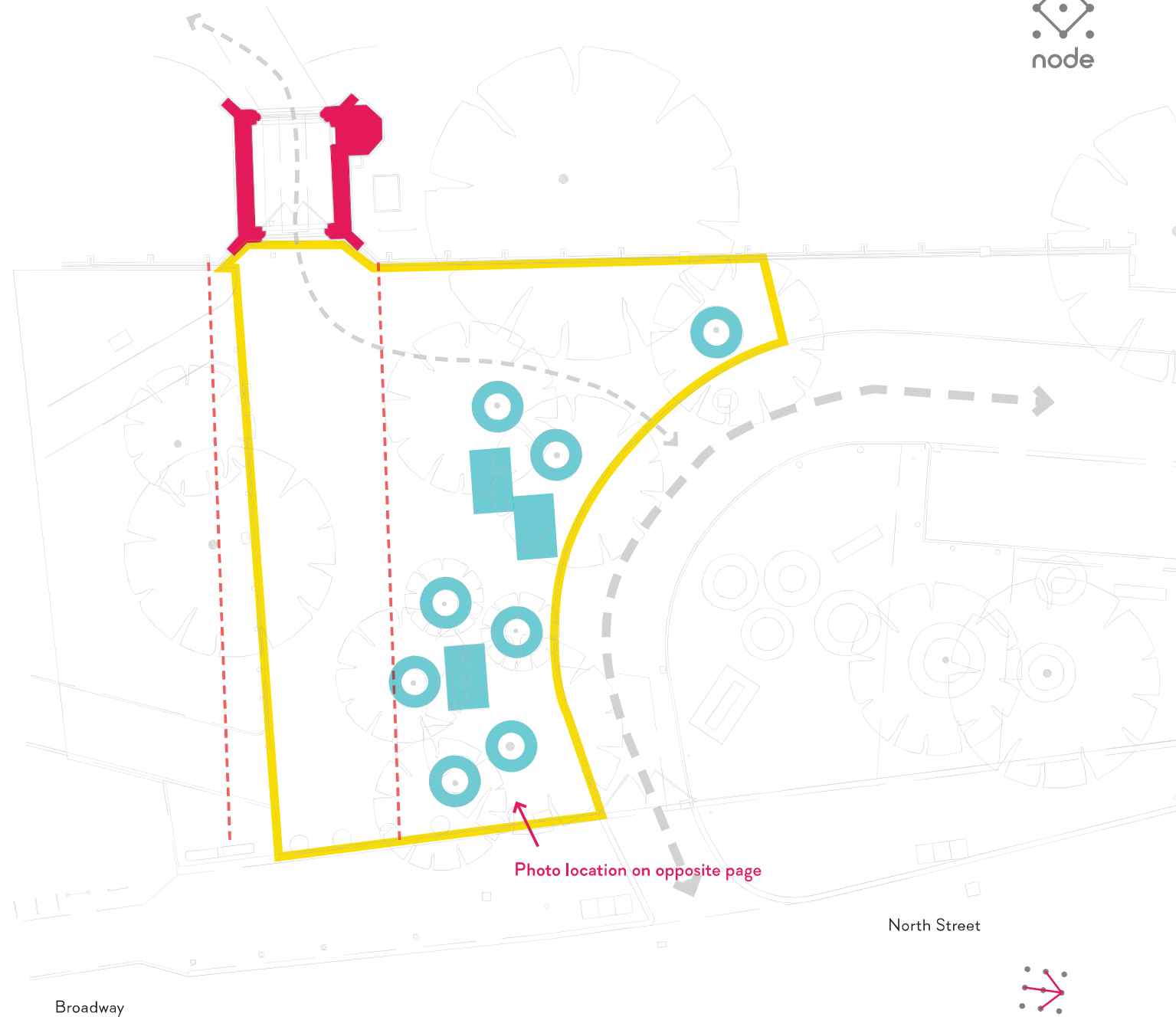
Existing materials



Factors to consider:

- Re-use of good quality paving materials on site to retain heritage feel of the setting

-  Area of existing flagstone paving
Approx. area = 470m²
-  Area of existing granite sett pavers around benches
Approx. area = 18m²
-  Area of existing granite sett pavers around trees
Approx area = 20m²



North Street

Broadway


Scale 1:200 @A3

Concept and Proposed Design

Key Principles and Concept diagram



1. Setting

The Curfew Tower is centrally located within a simple and symmetrical landscape design that frames the Tower and gives visual prominence to the building facade by minimising street furniture.

2. Legibility and Place

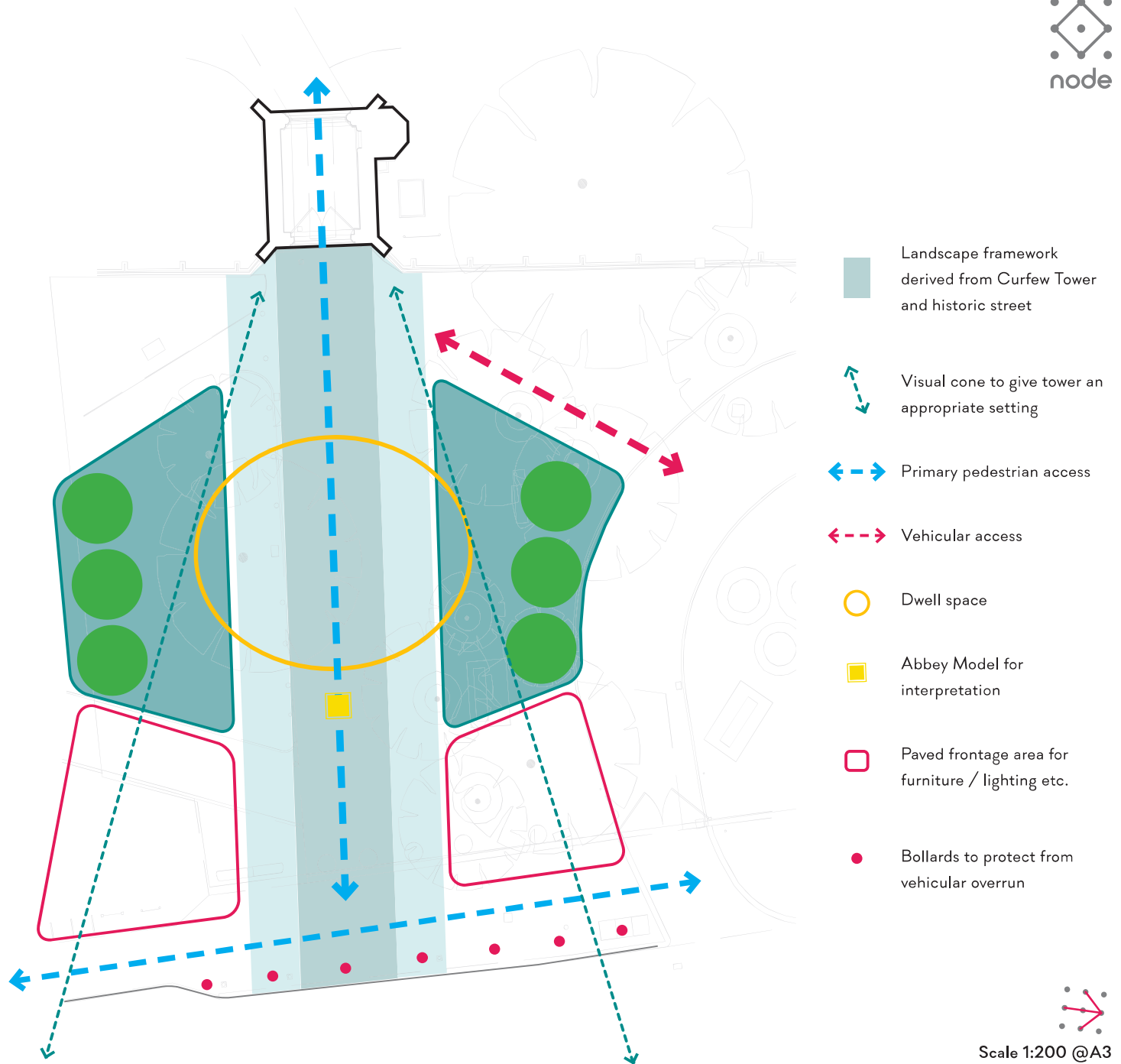
Pedestrian and vehicular movement routes are maintained as existing but with clear demarcation using kerbs, material changes or clear sight-lines and uncluttered space.

3. Interpretation

Historic 'Church Path' street is shown with high quality paving aligned with Curfew Tower. Bronze model of Complete Abbey is also displayed within this axis.

4. Accessibility

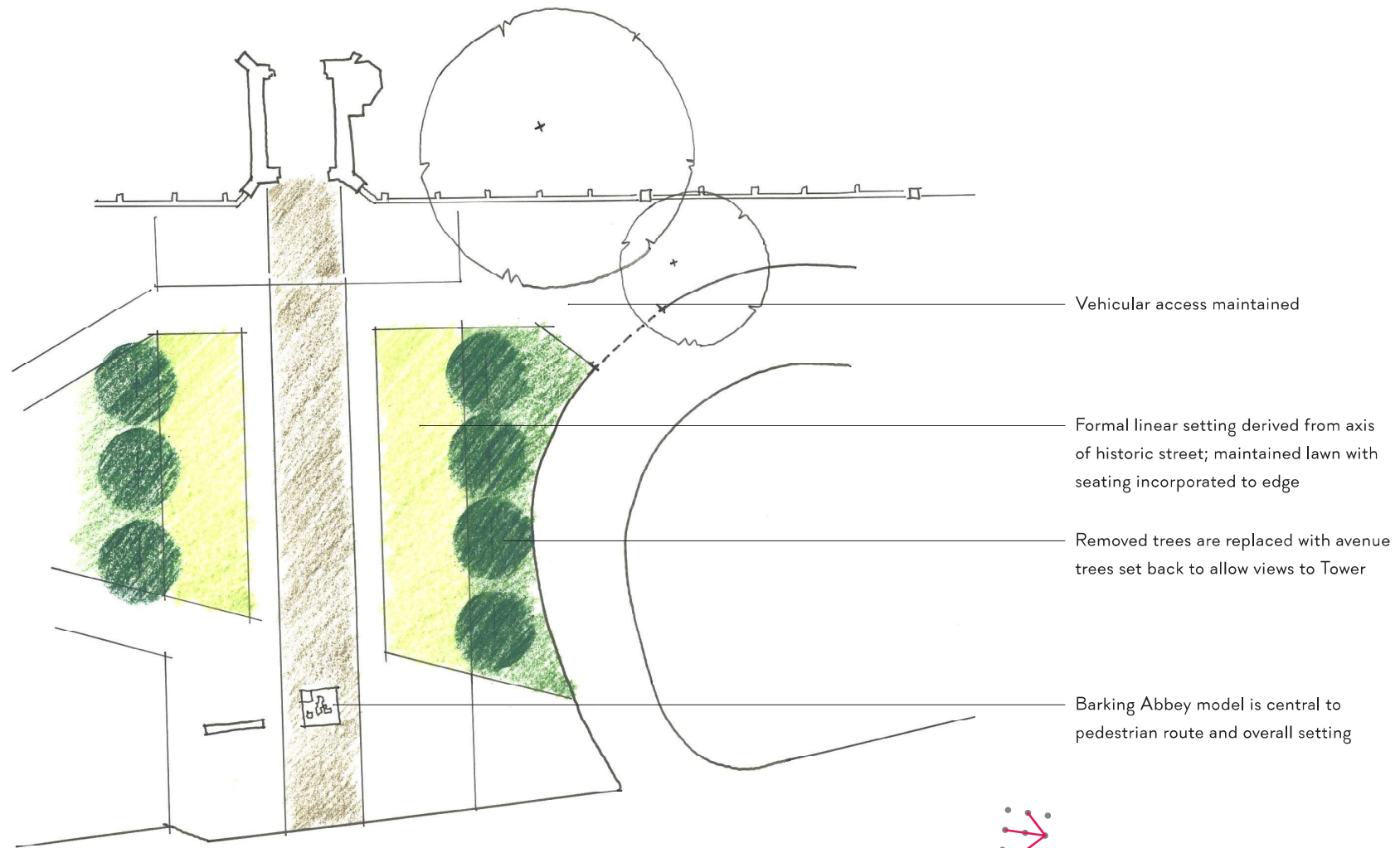
Ensuring that gradients, seating, edge visibility and surfaces are safe and accessible and the area is appropriately lit at night. Bollards are used for pedestrian safety where necessary.



Scale 1:200 @A3

Concept and Proposed Design

Design Approach: 'Formal symmetry'



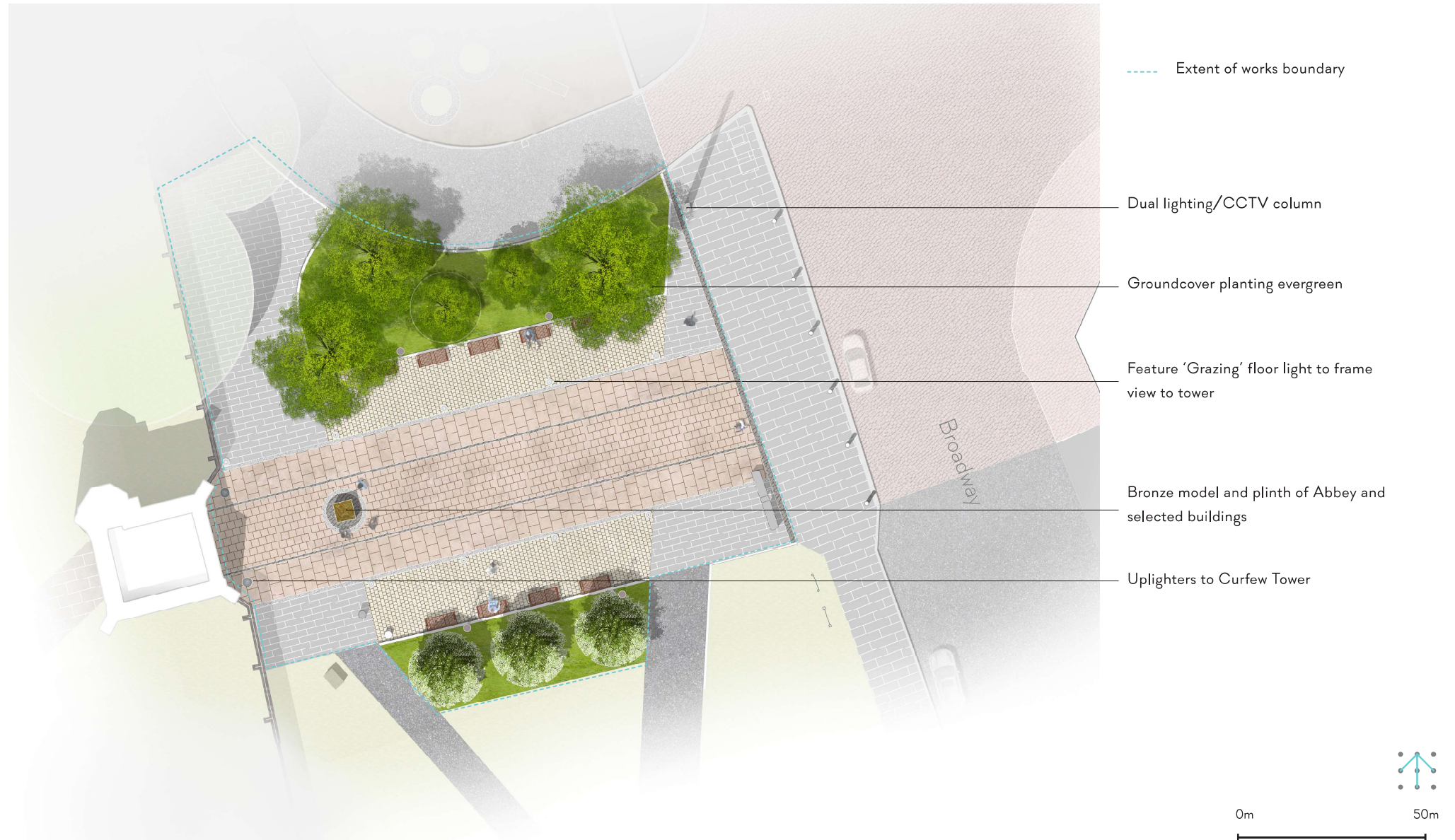
Scale 1:200 @A3

Concept and Proposed Design

Rendered Plan



Refer to Drawing FOC0544-03-101 for detailed legend showing material specifications



Proposed Materials Palette

Paving



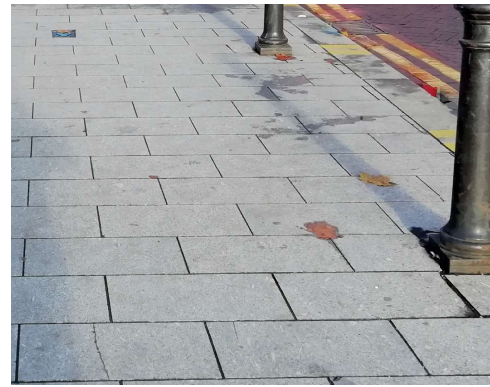
Paving Type 1

Reused Yorkstone



Paving Type 2

Yorkstone setts
Marshalls Scoutmoor Yorkstone Setts
150x100mm/200x100mm
Capital finish



Paving Type 3

Granite paving
To match existing specification

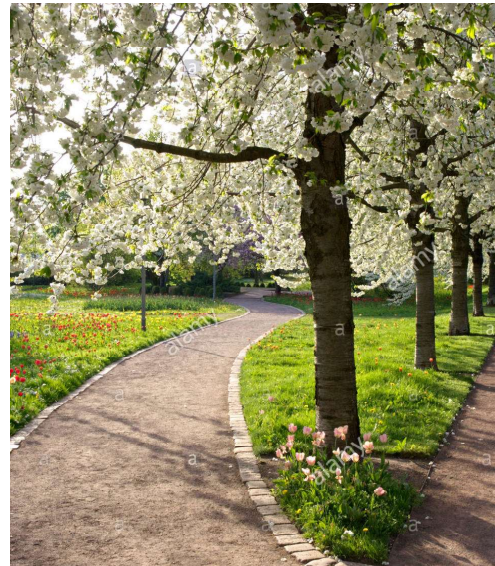


Paving Type 4

Reused granite setts

Proposed Materials Palette

Soft landscape materials



Tree Type T1

Existing trees area

Native birch trees
Betula pendula (Silver Birch)

Tree Type T2

Feature avenue trees

Prunus avium 'Plena'

Planting Type 1

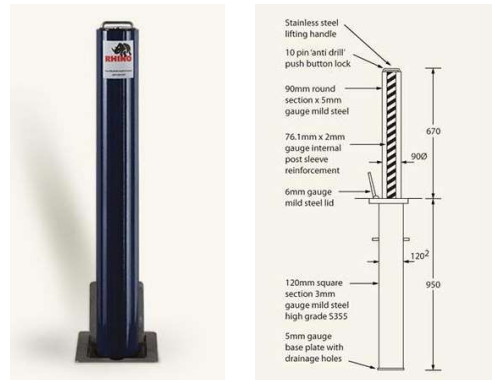
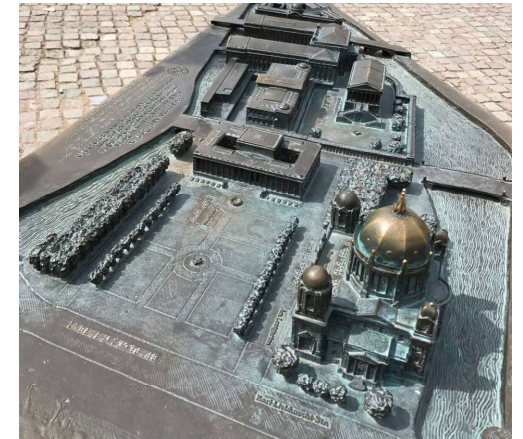
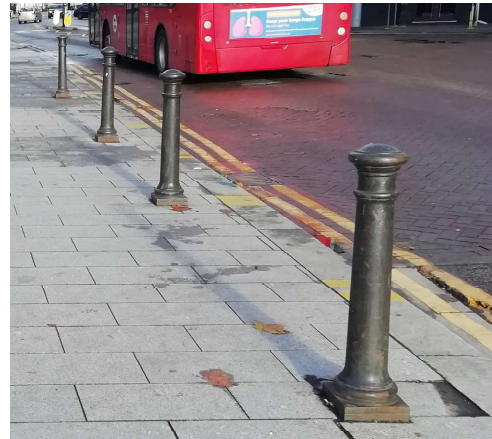
Ground cover planting 200mm max
Evergreen low maintenance

Planting Type 2

Clipped hedge around tree
Circular form
Taxus Baccata (Yew)

Proposed Materials Palette

Furniture and Structures



Suggested Supplier contact for Stage 4 Design:

ARCH BRONZE Ltd

Email: archbronze@btconnect.com
 Telephone: +44 20 8788 9188

Bench

- **FalcoLinea Seat**
 1590x666mm
 Armrests included

Bollards

- **New Bollard to match retained bollards specification**
- **Proposed collapsible bollards**
 Rhino RT R8 Heavy Duty Round Steel Powder Coated Telescopic Bollard
 Dia 90mm, height 670mm above ground, 950mm below ground
 Powder coated to RAL

Litter bin

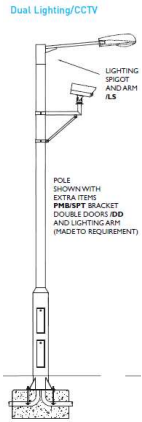
- **Marshalls Geo Litter Bin**
 Single Litter Bin With Plastic Liner. Size (h x w): 1150 x 500 mm

Signage

- **Bronze model and plinth of Abbey**
 Approx 1000x1000mm

Proposed Materials Palette

Lighting/CCTV



Dual CCTV
Altron Dual lighting/CCTV column

Column mounted public realm lighting
DW Windsor
Sky family, low-glare public realm luminaire



Feature 'Grazing' floor light

Collingwood GL200
Dia 65mm



Uplighters

Collingwood GL09 triple LED drive over ground light
A choice of three beam angles: 24°, 38°, 60° and three adjustable 8.5W LED units